



Stockton-on-Tees
BOROUGH COUNCIL

Arts Leisure and Culture Select Committee

1 December 2011

EIT Review of Children's Social Care

Passionate about Stockton-on-Tees

Outline of Presentation

- Brief recap
- Development day
- Permanence
- Family support
- Social work teams
- Towards a new structure
- Other issues
- Next steps

Brief Recap

- Scope of review
- Legal framework
- Current issues
- Case studies
- Workload/budget
- Key questions

Development Day

- 18 November 2011
- Cross section of staff
- Background documents
- Aims
- Principles
- Feedback

Permanence

- Definition
- Existing structure
- Consensus in favour of discrete team
- Focus?
 - Looked after children
 - Special guardianship orders
 - Residence orders
 - Private fostering

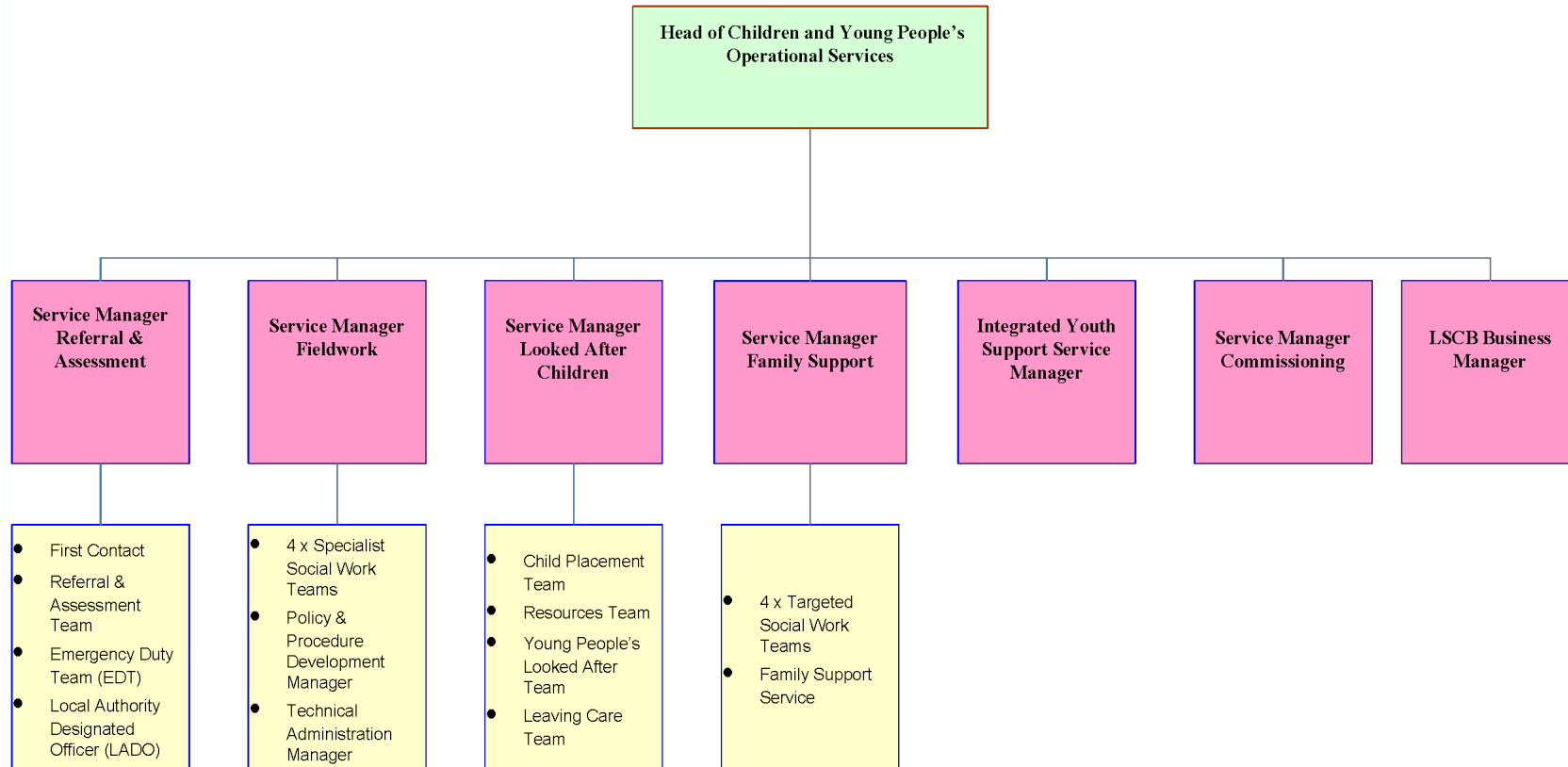
Family Support

- Definition
- EIG review - home visitors
- Majority in favour of discrete team
- Focus
 - Early intervention
 - Support to social workers
- Should some resources remain attached to social work teams?

Social Work Teams

- Current structure
- Referral and assessment (RAT)
- Specialist/targeted split
- Future arrangements?
 - Remit of teams
 - Allocation of responsibilities/tasks

Towards a New Structure



Passionate about Stockton-on-Tees

Other Issues to Consider

- Posts to review/discontinue
- Impact of temporary arrangements
- Recruitment & retention measures

Next Steps

- Discussion document 23.12.11
- Project team 06.01.12
- Recommendations to:
 - ALC select committee 15.02.12
 - Cabinet 08.03.12
- Formal consultation